



**1300TEMPFENCE**  
AND SO MUCH MORE!

**25+**  
**YEARS**  
TOGETHER IN BUSINESS

# CAPABILITY STATEMENT



 **SITE HQ**

 **1300HOARDING**

 **SIGNAGE HQ**

 **1300SITECAM**



**Looking to buy? Site HQ is Australia's leading site solutions provider.**  
With over 25 years experience in the industry, we pride ourselves on competitive prices, fast, reliable service and industry leading products.

**EXPLORE OUR RANGE OF:**

- TEMPORARY FENCING & BARRIERS
- PORTABLE TOILETS & SHOWERS
- WATER FILLED BARRIERS
- TRAFFIC, SITE & SAFETY EQUIPMENT
- SOLAR/WIRELESS SITE CAMERAS
- ACOUSTIC CURTAINS
- SHADE CLOTH
- STAR PICKETS
- GROUND PROTECTION
- POWER AND DISTRIBUTION
- SIGNAGE HQ
- AND MUCH MORE!

**1300 748 347 | [sitehq.com.au](http://sitehq.com.au)**



# CONTENTS

ABOUT US	4
DEDICATED ACCOUNT SUPPORT	5
OUR MISSION	5
OUR VALUES	5
EXECUTIVE TEAM	6
EXPLORE OUR PRODUCT RANGE	7
• Engineered Temporary Fencing	8
• Temporary Fencing	8
• Semi Permanent Fencing	8
• Alternative Fencing	9
• SmartWall	9
• Crowd Control Barriers	9
• Water Filled Barriers	10
• Solar/Wireless Site Cameras	10
• Ground Protection & Steel Road Plates	11
• Noise Reduction Barriers	11
• Portable Toilets	11
• External Hoarding	11
• Internal Hoarding	12
• Shade Cloth	12
• Printed Mesh Banners	13
OH&S - OUR CONTINUAL POLICY	13
OUR NATIONAL LOCATIONS	15
THANK YOU	16



## LEADERS IN COMPLETE SITE SOLUTIONS

With over 25 years' experience in the industry, 1300TempFence has grown to be one of Australia's leading complete site solutions companies by providing competitive prices, fast, reliable service and industry leading products. We ensure that our customers can get their job done in a safe and secure environment. Whether you work in; infrastructure, civil, industrial, commercial, residential or events our goal is to provide a service that makes your job or event run that little bit smoother.

With our vast experience, we know exactly what works on site. Our product range includes; temporary fencing, crowd control barriers, portable toilets, noise reduction barriers, water filled barriers and site cameras plus much more. All our products are fully compliant to Australian Standards. With branches across the country, we have Australia covered and are proud to say we're one of Australia's preferred specialists in temporary fence hire and sales.



# DEDICATED ACCOUNT SUPPORT

We provide dedicated account support. This combined with our proven, robust management structure enables close effective communication, while maintaining

operational efficiency and the continual ability to meet our customers' needs.



Your unique requirements



Hire team  
(Single point of contact)



Account management



Leading product range



Installers & services

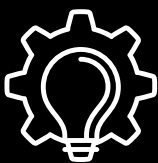
## OUR MISSION

We're ready to lead by offering solutions and value, set to achieve sustainable, profitable growth, by investing in our people, products and processes so that we can go out there and deliver the best customer experience.

*"We're in a service business. Our success is built off the service we provide for our customers. So, we focus on doing it right the first time, to keep our customers happy"*

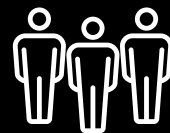
**Bruce Fouracre** | Director 1300TempFence

## OUR VALUES



### INNOVATION

Harness our drive and passion to continually question everything we do. Challenge, change and commit.



### TEAMWORK

Together we will challenge and support, collaborating on the things that will make a difference.



### OUR FOUNDATION

Treat everyone as we want to be treated, with honesty, integrity and respect.



### CUSTOMER

Being truly service focused, offering value and solutions and striving for 100% satisfaction is essential.

# MEET OUR EXECUTIVE TEAM

Founded by brothers, Martin Fouracre, Bruce Fouracre and Mark Eaves in 1999, 1300TempFence has since grown to become one of Australia's largest equipment hire and sales businesses. The Ready Industries Group of businesses encompasses the following brands and products; **1300TempFence**, **Site HQ**, **1300Hoarding**, **1300SiteCam**, **1300Dunnys** and **Signage HQ** among others.

As our business has grown, we've continued to add key personnel to our senior management structure to ensure our level of service to our clients is of the highest standard.

The Managing Directors and Senior Management Team combined, possess over 100 years of Equipment Rental and Hire Industry experience across a range of different markets and product categories.



**Martin Fouracre**  
Director



**Bruce Fouracre**  
Director



**Steve Ashenden**  
CEO



**Paul Sass**  
General Manager



**Dan Clifton**  
General Manager - Sales



**Yianni Drakos**  
General Manager - Operations

# EXPLORE OUR PRODUCT RANGE

With 25+ years industry experience, we know what works on your site.



Engineered  
fencing



Temporary  
fencing



Semi-permanent  
fencing



Alternative  
fencing options



SmartWall



Crowd control  
barriers



Water filled  
barriers



Site security  
cameras



Ground  
protection



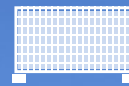
Noise reduction  
barriers  
(Acoustic curtains)



Portable toilets



Hoarding



Shade cloth





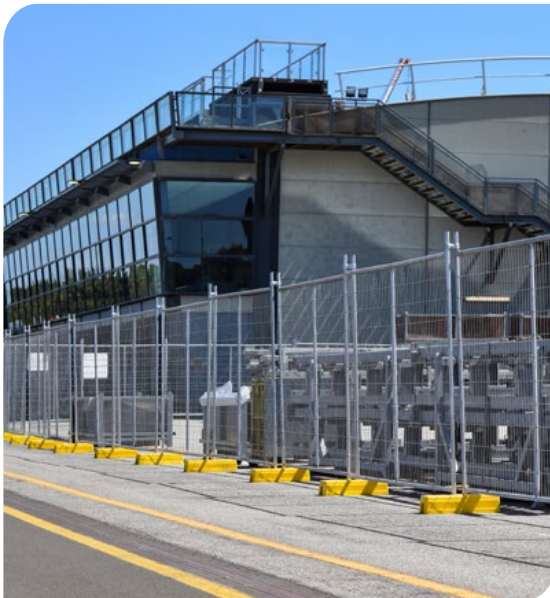
## ENGINEERED TEMPORARY FENCING

At 1300TempFence, we take pride in supplying industry leading, fully engineered systems, so you don't have to worry about issues with compliance or safety. Our systems are all tested and certified by third party engineering consultants.

We ensure the necessary relevant engineering documents are provided to you throughout the quoting and installation stages of your project. All of our temporary fencing is tested to be compliant with the most current version of the Australian Standard for Temporary Fencing AS-4687:2022. We have engineered different bracing solutions to suit multiple wind speeds, to service the minimum requirement of Stability Class fence at 54km/hr right up to 147km/h depending on your site's specific requirements.

### Capabilities include:

- More wind resistant than standard temporary fence
- Fully engineered system
- Certified by third party engineering consultants
- Designs specifically for shade cloth & printed mesh installations.



## TEMPORARY FENCING

Temporary fence is vital when it comes to managing and protecting your work site. Whether the need is to prevent the public from entering a hazardous site, limiting access, providing security, or ensuring health and safety requirements are met, we have a temporary fencing solution to help you. Our infrastructure systems have been specially designed and engineered to perform on any major project and with our unwavering commitment to OH&S and use of quality products we can provide unrivalled site security and safety solutions.

### Capabilities include:

- Any size site, any hire period
- Fully engineered systems
- Night & weekend works

### Projects include:

- Road
- Rail
- Bridges
- Tunnels
- Airports
- Telecomms
- Water
- Ports
- Energy
- Sewers



## SEMI PERMANENT FENCING

When you require something stronger and sturdier than normal temporary fence. Try our semi-permanent fencing options:

Our **Rammed Post** system has thick walled posts which are driven into the ground, and clamped to the panels.

Our **Spike Post** system features a spike which is driven into the ground first, with the pipe inserted into the spike's receiving slot.

Both systems are specially engineered and designed to withstand very harsh conditions and high wind forces. We can help advise, which is suitable for your site.

### Benefits:

- No need to use temporary fence feet and bracing
- No tripping hazards
- No concreting required, no residual damage



## ALTERNATIVE FENCING

Our range of Temporary Fencing solutions are designed to suit safety, presentation, and environmental needs across any site.



**Temporary Prestige Fencing** - Ideal for when a smarter presentation or extra security is required.



**White Picket Fencing** - High quality, stylish temporary event fencing ideal for maintaining safe crowd flow.



**Temporary Pool Fencing\*** - Restrict and limit access to your pool area, combine with our self closing gate.



**Plastic Sheet Fencing** - Providing full blackout, this is a convenient alternative to plywood hoarding.



**Temporary Koala Fencing** - An effective solution to help protect native wildlife by preventing them from wandering onto roads and work sites.

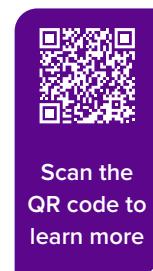
\*Temporary Pool Fencing restricts and limits access and should never be used as a substitute to active supervision. Supervision is vital to prevent drownings or water related injuries.



## SMARTWALL

State of the art in design, the SmartWall utilises our temporary fence panel with a simple, yet effective, one-piece water filled barrier base. The base component's compact narrow design eliminates tripping hazards.

While the low profile prevents anything sliding underneath and its sloping sides deter climbing. Strong and durable, the brightly coloured base provides maximum visibility. With its sleek aesthetic, the SmartWall is ideal for high-profile sites where maximising the work area is required.



Engineer certified to meet stability class AS4687:2022



## CROWD CONTROL BARRIERS

Managing a construction site or large scale event? Crowd control barriers are a must for creating a safe and secure environment to maintain safe crowd flow.

Whether for employees, guests, or the general public; it's important to have the appropriate temporary fencing solution to suit your situation. At 1300TempFence, we have the expertise to ensure your work site or event is both safe and secure, keeping people away from potential hazards while ensuring the safe movement of people.

Our strong, sturdy and durable crowd control barriers are lightweight with stable flat feet. To reduce the risk of tripping they have holes for pegging or dyna-bolting.

Also available in the range are our Crowd Control Pedestrian Gates.



**SHIELD 1**



**KI 1000**

## WATER FILLED BARRIERS

Water filled barriers are a great safety barrier solution. Suitable for traffic management, work sites and crash protection. At 1300TempFence, we have the following options available:

Our **Shield 1** barrier is made from a patented composite design, utilising a high strength modified UV stabilised polyethylene. This Australian made, re-directive barrier is approved by road authorities Australia wide. MASH test level 1 certified. (2,270kg at 50 km/h and 250 accepted dynamic deflection 2.2m)

The **KI 1000** Barrier has been designed specifically as a pedestrian and medium speed zone barrier. This barrier has a simple interlocking system that allows the barriers to remain connected while moving through angles up to 120° each way. Fitted with reflective tape, these highly visible barriers have two apertures topside for the fitment of hazard lights, pole signage or extended mesh fencing. Complies with Australian Standard AS1742-3-2019 Traffic Control Devices for works on roads.



## SOLAR / WIRELESS SITE CAMERAS

Monitor and protect your site and assets with our solar/wireless security camera systems. Available as either single or double camera units with the option of either above-ground, in-ground, container mounted or our new telescopic concrete base. Reduce the risk of theft and gain peace of mind that your work site has complete 24/7 visibility.

### Benefits:

- Solar & battery powered
- Uses Telstra 4G wireless internet
- High quality 4K camera
- Advanced motion detection up to 20m range
- Email and push notifications to your mobile or tablet when motion is detected
- Flood light & strobe light can activate when motion is detected
- We can also provide Site Monitoring, if this is of interest, please let us know.



**4K TURRET CAMERA**

**180° / 360° CAMERA**



**PTZ CAMERA**



Solar & battery (no power needed)	24/7 Live view (smart phone / tablet)	Artificial intelligence (motion detection)	Alert emails with 3 photos & app push notifications	Telstra 4G wireless internet	Flood & strobe light (on motion detection)	Night vision mode (30m motion detection)	4MP wide angle camera lens	Water & dust resistant (IP67)

### Detection & coverage range:

CAMERA TYPE	SINGLE CAMERA	DOUBLE CAMERA
Turret Camera	104° 60M Day / 30M Night	2x 104° 2x 60M Day / 2x 30M Night
180° / 360° Camera	180° 60M Day / 30M Night	360° 2x 60M Day / 2x 30M Night
PTZ Camera	90° 60M Day and Night	-

ColorVu Technology lets cameras capture vivid, full-colour video even in low light, using a large aperture to reduce reflections, overexposure, and detail loss.





## GROUND PROTECTION & STEEL ROAD PLATES

Our **Ground Protection Mats** (Bog / Track Mats) protect grass and soft ground while preventing vehicles from getting stuck. Made from UV-stabilised recycled polyethylene, they flex under heavy loads without breaking and spread wheel weight effectively. Size: 2400 × 1200mm.



Our **Steel Road Plates** are ideal for construction sites, providing safe access over trenches, pits, and driveways for both vehicles and site traffic. Compliant with Australian Standards, all plates feature a certified central lifting point and corner holes for safe handling.



## NOISE REDUCTION BARRIERS (Acoustic Curtains)

Our noise reduction barriers are a must to help protect local communities and employees from the harmful effects of excessive noise. Designed using world-leading acoustic technology they are made from high quality, lightweight, water resistant PVC to provide the most effective temporary sound solution. Our premium barriers are low centred to ensure noise can't penetrate beneath and with a strong insulated core they provide up to 20 decibels of sound absorption performance.

### Benefits:

- Work in public spaces
- Use bigger machinery
- Conduct night works
- Reduce event generator noise
- Suitable for indoor & outdoor use

Scan this QR code to watch the noise reduction test on YouTube



## PORTABLE TOILETS

Portable toilets can be an essential requirement when you are running a construction site. We provide safe, comfortable and hygienic portable toilets that are modern in design, yet ergonomically friendly. All our toilets come with a fresh water flush for increased sanitation and cleanliness. Reducing the spread of waste and germs. We offer weekly, fortnightly, monthly & on demand service & pump outs.

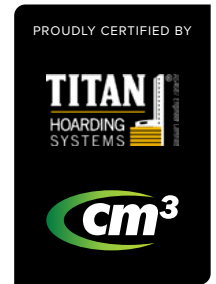




## INTERNAL HOARDING

For our internal hoarding, we use TITAN, the world's leading supplier of Internal A Class Hoardings. These Engineer Certified products can free stand up to a massive 7.2 metres high!

Ideal for use in retail, commercial, offices and more. The ability to fit them to custom sizes and spaces makes them the perfect choice to disguise any construction site, prevent hazards of the site impacting the public, and create privacy. Our internal hoarding has ZERO fixings from floors or ceilings, meaning a faster installation process with no costly expenses after removal.



## EXTERNAL HOARDING

No construction site is complete without security and protection. Hoarding is a vital component, designed to shield your construction site from view of the public, as well as prevent unauthorised access and hazards of the construction site impacting the public. All of our timber hoarding complies with local & state regulations, OH&S and is tested and certified to Australian Standards. Our In-ground and Dynabolt Hoardings are compliant to AS1170.2:2021. Wind actions. Our Above ground/counterweight Hoardings are compliant to AS4687:2022 Temporary Fencing & Hoarding Parts 1 and 3.

Secure, long-lasting and cost-effective, our configurations are specifically designed to withstand the rigours of the modern building site. The development of our Hoarding Systems is guided by the highest standards of safety and consistency.



Looking to create visual impact with your hoarding?  
Our team can help, ask us how!

## SHADE CLOTH

Ideal for sun protection and privacy screening. Our heavy duty, UV protected shade cloth is available in a wide variety of colours and shade ratings.

### Density options

Shade rating: 50%, 70%, 90%

### Colour options

● Black ● Blue ● Green ● Sandstone ○ White





## **PRINTED MESH BANNERS**

Signage HQ specialise in producing high quality Printed Shade Cloth products to help you market and grow your business.

Our in-house Graphic Designers will provide you with expert advice tailored to your job requirements.

### **Printed Shade Cloth**

Banner Mesh / Open Weave

### **Boards and Signs**

Aluminium Composite / Vinyl Banners / Corflute Boards

### **Custom and Specialty Printing**

Crowd Control Barrier Slips / Flags / Stickers / Custom Banners

## **OH&S OUR CONTINUAL POLICY**

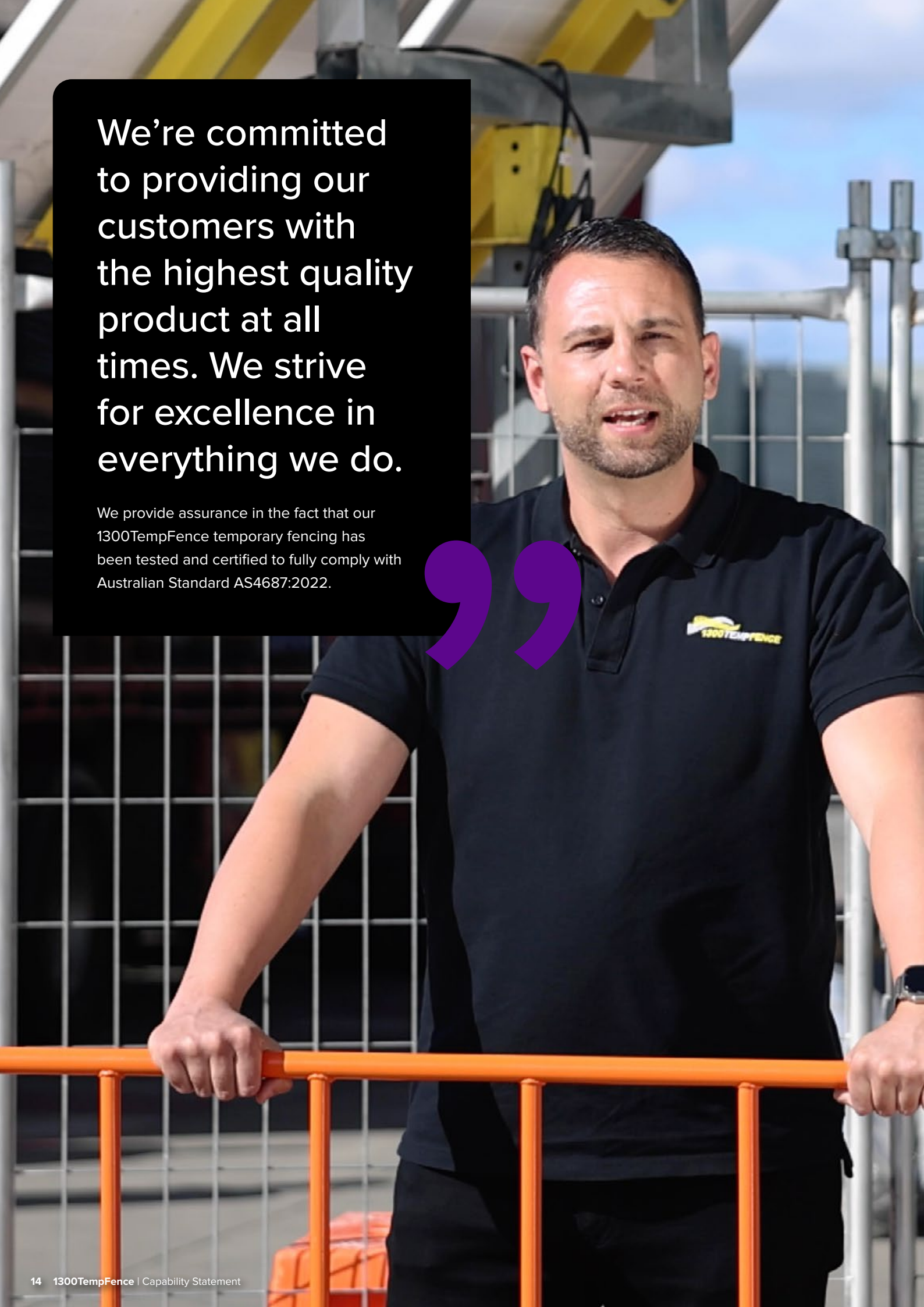
We take a responsible approach to the way we work and behave, both inside and outside our organisation. As a growing business, we know we have an impact on our colleagues, our customers, the environment and our local communities, as well as on wider society and the economy.

At 1300TempFence, our top priority is ensuring that our company is a safe environment for both our colleagues and our customers. We're committed to providing a workplace that meets high safety standards, while equipping our team with the necessary knowledge and equipment to protect themselves on the job. This commitment extends to delivering safe fencing solutions and installations to protect both the workers on site and the general public. We ensure all our installers are fully compliant.



We're committed to providing our customers with the highest quality product at all times. We strive for excellence in everything we do.

We provide assurance in the fact that our 1300TempFence temporary fencing has been tested and certified to fully comply with Australian Standard AS4687:2022.



# OUR NATIONAL LOCATIONS

With several locations across Australia, we're conveniently located to help you with your temporary fencing needs.



## BRANCH LOCATIONS

### MELBOURNE (HEAD OFFICE)

1/539 Mt Derrimut Rd,  
Derrimut VIC 3026

### MELBOURNE (STH EAST)

235-239 Abbots Rd,  
Dandenong South VIC 3175

### SYDNEY

5 Denoci Cl,  
Wetherill Park NSW 2164

### NEWCASTLE

7/19 Balook Dr,  
Beresfield NSW 2322

### CANBERRA

11 Wycombe St,  
Queanbeyan East NSW 2620

### BRISBANE

20 Southlink St,  
Parkinson QLD 4115

### SUNSHINE COAST

725 Chevallum Rd,  
Chevallum QLD 4555

### DARWIN

41 Pruen Rd,  
Berrimah NT 0828

### PERTH

122 Sultana Rd West,  
High Wycombe WA 6057

### BUNBURY

6 Warrego Road,  
Picton East WA 6229

### ADELAIDE

2/26 Circuit Drive,  
Hendon SA 5014

*(By appointment only)*

ADDITIONAL AGENT AND DISTRIBUTION YARDS LOCATED IN:  
Warrnambool, Lismore, Mackay and Townsville.





# **1300TEMPFENCE**


## **AND SO MUCH MORE!**

### **THANK YOU**

To discuss this capability statement in further detail, please use the contact information below. Call today to receive your tailored quote. We look forward to working with you.

 **1300 836 733**

 **1300 382 592**

 **info@1300tempfence.com.au**

 **1300TempFence.com.au**

